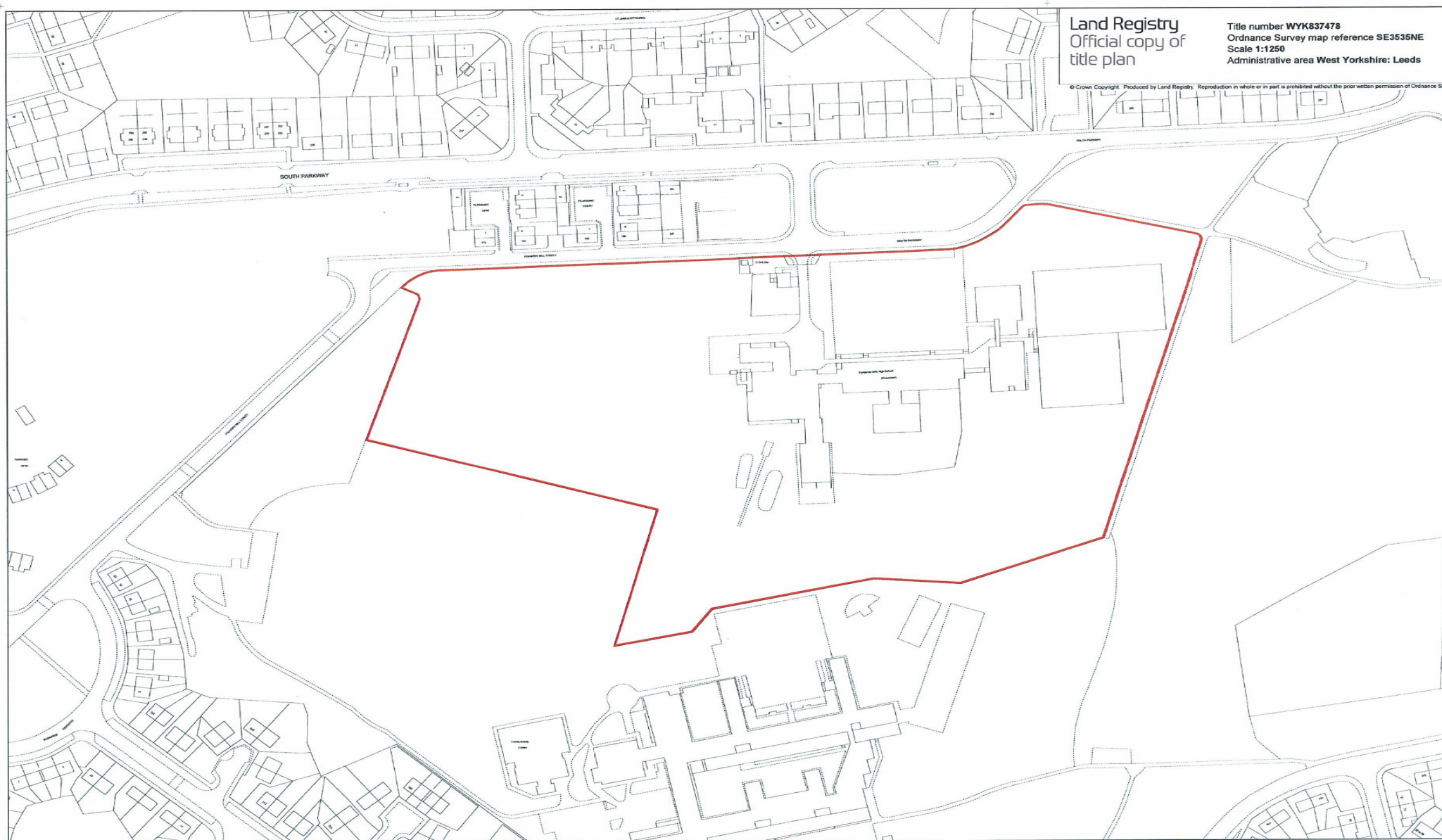


Annex 2 - Disposal of the leasehold interest – Red line Plan



Land Registry
Official copy of
title plan

Title number WYK837478
Ordnance Survey map reference SE3535NE
Scale 1:1250
Administrative area West Yorkshire: Leeds

© Crown Copyright. Produced by Land Registry. Reproduction in whole or in part is prohibited without the prior written permission of Ordnance Survey.

This official copy issued on 1 November 2010 shows the state of this title plan on 1 November 2010 at 10:35:53. It is admissible in evidence to the same extent as the original (s.67 Land Registration Act 2002).
This title plan shows the general position, not the exact line, of the boundaries. It may be subject to distortions in scale. Measurements scaled from this plan may not match measurements between the same points on the ground. See Land Registry Public Guide 19 - Title Plans and Boundaries.
This title is dealt with by Land Registry, Nottingham Office.